

Meeting	Combined Pou Tu Te Rangi Joint Management Committee and Harding Park Committee
Date	Tuesday 03 September 2019
Time	2.00pm
Venue	Lighthouse Function Centre, Dargaville

Open Agenda

Membership

Chair: Rex Nathan

Members: Georgina Connelly
Councillor Victoria del la Varis-Woodcock
Robert Harding
Councillor Karen Joyce-Paki
Willie Wright

Gavin Dawson, Governance Advisor
gdawson@kaipara.govt.nz

Contents

1	Opening	1
1.1	Karakia	1
1.2	Present	1
1.3	Apologies	1
1.4	Confirmation of agenda	1
1.5	Conflict of interest declaration	1
2	Public Input	1
3	Minutes	3
3.1	Confirmation Committee minutes 04 June 2019	3
4	Information	11
4.1	Pou Tu Te Rangi Harding Park Operations Update	13
	Closure	19

Ordinary meeting of the
Combined Pou Tu Te Rangi Joint Management Committee
and Harding Park Committee
Tuesday 03 September 2019 in Dargaville

1 Opening

1.1 Karakia

1.2 Present

1.3 Apologies

1.4 Confirmation of agenda

The Committee to confirm the Agenda.

1.5 Conflict of interest declaration

Elected members are reminded of the need to be vigilant to stand aside from decision-making when a conflict arises between their role as Councillors and any private or other external interest they might have. It is also considered best practice for those members to the Executive Team attending the meeting to also signal any conflicts that they may have with an item before Council.

2 Public Input

Nil.

3 **Minutes**

3.1 **Confirmation of Committee minutes 04 June 2019**

General Manager Governance, Strategy and Democracy

1607.13

Recommended

That the unconfirmed minutes of the combined Pou Tu Te Rangi Joint Management Committee and Harding Park Committee meeting held 04 June 2019 be confirmed as a true and correct record.

Meeting	Combined Pou Tu Te Rangī Joint Management Committee and Harding Park Committee
Date	Tuesday 04 June 2019
Time	Meeting commenced at 2.04pm Meeting concluded at 3.25pm
Venue	Lighthouse Function Centre – 32 Mount Wesley Coast Road, Dargaville
Status	Unconfirmed

Minutes

Membership

Chair: Rex Nathan
Members: Robert Harding
Matiu Wati
Willie Wright
Councillor Victoria del la Varis-Wood
Councillor Karen Joyce-Paki

Jason Marris
General Manager Governance, Strategy and Democracy



Contents

1	Opening	3
1.1	Karakia	3
1.2	Present	3
1.3	Apologies	3
1.4	Confirmation of agenda	3
1.5	Conflict of interest declaration	3
1.6	Resignation of Committee Member	3
2	Presentations and Petitions	3
3	Minutes	4
3.1	Confirmation of combined Pou Tu Te Rangi Joint Management Committee and Harding Park Committee minutes 05 March 2019	4
4	Decision	4
4.1	Landscape Design Plan Proposal.....	4
5	Information	6
	Closure	6

Unconfirmed

**Combined Pou Tu Te Rangi Joint Management Committee
and Harding Park Committee meeting
Tuesday 04 June 2019 in Dargaville**

1 Opening

1.1 Karakia

Willie Wright opened the meeting with a karakia.

1.2 Present

Willie Wright (Chair), Robert Harding, Councillor Karen Joyce-Paki and Councillor Victoria del la Varis-Woodcock

Attendance

Name	Designation	Item(s)
Hamish Watson	Parks and Recreation Manager	All
Francis Toko	Iwi Relations Manager	From part of Item 4.1 on (arrived 2.15pm)
Yvonne Hancock	KDC Staff	All (Minute-taker)

1.3 Apologies

Moved Wright/Joyce-Paki

The apology of Rex Nathan was received.

1.4 Confirmation of agenda

The Committee confirmed the agenda.

1.5 Conflict of interest declaration

Nil.

1.6 Resignation of Committee Member

The Chair informed the meeting that Matiu Wati formally resigned as a member of the Combined Pou Tu Te Rangi Joint Management Committee and Harding Park Committee, through the minutes of the last meeting of the Te Uri o Hau Taumata Council, and that resignation documentation would be sent to the Committee.

2 Presentations and Petitions

Nil

3 Minutes

3.1 Confirmation of combined Pou Tu Te Rangi Joint Management Committee and Harding Park Committee minutes 05 March 2019

General Manager Governance, Strategy and Democracy

1601.23

Moved Wright/Joyce-Paki

That the unconfirmed minutes of the combined Pou Tu Te Rangi joint Management Committee and Harding Park Committee meeting held 05 March 2019 be confirmed as a true and correct record.

Carried

4 Decision

4.1 Landscape Design Plan Proposal

Parks and Recreation Manager

4702.06

[Secretarial note: The Committee asked the Parks and Recreation Manager to:

- Check the purpose of the water tank
- Look into options for the construction of suggested paths, whether they will be grass, metal, a hoggin path, keeping in mind the paths would be used by the elderly, wheelchairs, prams etcetera.
- Enquire on the costing of suggested angle parking area retaining wall.
- Check whether the suggested angle parking meet safety requirements.]

Motion (1) Wright/del la Varis-Woodcock

That the Combined Pou Tu Te Rangi Joint Management Committee and Harding Park Committee:

- a) Notes the Parks and Recreation Manager's Report 'Landscape Design Plan Proposal'.
- b) Does not approve the implementation of the following actions as identified in the Landscape Design Plan circulated with this report as Attachment A:
 - i. Amenity and screen planting.
 - ii. Emphasis on Pa access in consultation with Iwi.
 - iii. Interpretation signage.
 - iv. General signage.
 - v. Improvements to walking tracks.
 - vi. Car parking and drainage.

Amendment moved (2)

Joyce-Paki/Harding

That the Combined Pou Tu Te Rangi Joint Management Committee and Harding Park Committee:

- a) Notes the Parks and Recreation Manager's Report 'Landscape Design Plan Proposal'.

- b) In relation to Concept Sheet 1/3 of the Landscape Design Plan, circulated with the Parks and Recreation Manager's report as Attachment A:
 - i. Supports, in part, Concept Sheet 1/3 to enable planting to begin, with a preference for native and eco-sourced plants.
 - ii. Excludes Concept Sheet 1/3's Legend Key numbers 1 and 2, being:
 - "1) Barrier composed of simple machinery elements arranged in sculptural way.
 - 2) Gatehouse/ticket booth."; and
 - iii. Requests the Parks and Reserves Manager to update the Committee on the water tanks and the kauri trees closest to the road.
- c) In relation to Concept Sheets 2/3 and 3/3 of the Landscape Design Plan, circulated with the Parks and Recreation Manager's report as Attachment A:
 - i. Agrees that the actions in Concept Sheets 2/3 and 3/3 be delayed until Council staff and the Committee have held separate conversations with the Dargaville Vintage Machinery Club, the Dargaville Museum and Littoralis Landscape Architecture.
- d) Extends its appreciation to Littoralis Landscape Architecture for the work completed to date in the circulated Landscape Design Plan.

Carried

Substantive motion (2) was then put:

That the Combined Pou Tu Te Rangi Joint Management Committee and Harding Park Committee:

- a) Notes the Parks and Recreation Manager's Report 'Landscape Design Plan Proposal'.
- b) In relation to Concept Sheet 1/3 of the Landscape Design Plan, circulated with the Parks and Recreation Manager's report as Attachment A:
 - i. Supports, in part, Concept Sheet 1/3 to enable planting to begin, with a preference for native and eco-sourced plants.
 - ii. Excludes Concept Sheet 1/3's Legend Key numbers 1 and 2, being:
 - "1) Barrier composed of simple machinery elements arranged in sculptural way.
 - 2) Gatehouse/ticket booth."; and
 - iii. Requests the Parks and Reserves Manager to update the Committee on the water tanks and the kauri trees closest to the road.
- c) In relation to Concept Sheets 2/3 and 3/3 of the Landscape Design Plan, circulated with the Parks and Recreation Manager's report as Attachment A:
 - i. Agrees that the actions in Concept Sheets 2/3 and 3/3 be delayed until Council staff and the Committee have held separate conversations with the Dargaville Vintage Machinery Club, the Dargaville Museum and Littoralis Landscape Architecture.
- d) Extends its appreciation to Littoralis Landscape Architecture for the work completed to date in the circulated Landscape Design Plan.

Carried



5 Information

Pou Tu Te Rangi Harding Park Operations Update

Parks and Recreation Manager 4702.06/OR

Moved Wright/del la Varis-Woodcock

That the Combined Pou Tu Te Rangi Joint Management Committee and Harding Park Committee:

- a) *Notes the Parks and Recreation Manager's report 'Pou Tu Te Rangi Harding Park Operations Update'.*

Carried

Closure

Meeting closed at 3.25pm

Confirmed

Chair

Kaipara District Council

Dargaville

Unconfirmed

4 **Information**

Pou Tu Te Rangi Harding Park Operations Update

Meeting: Combined Pou Tu Te Rangi Joint Management Committee and Harding Park Committee
Date of meeting: 03 September 2019
Reporting officer: Hamish Watson, Parks and Recreation Manager

Purpose/Ngā whāinga

To report to the Combined Pou Tu Te Rangi Joint Management Committee and Harding Park Committee (the Committee) on the operations by providing an update for the June 2019 - August 2019 period and the Capital Works Programme.

Executive summary/Whakarāpopototanga

Below is a summary of activities, operations and maintenance work carried out over the months of June 2019 to August 2019.

Recommendation/Ngā tūtohunga

That the Combined Pou Tu Te Rangi Joint Management Committee and Harding Park Committee:

- a) Notes the Parks and Recreation Manager's report 'Pou Tu Te Rangi Harding Park Operations Update' and its Attachments A and B.

Context/Horopaki

The Committee is charged with implementing the July 2012 Pou Tu Te Rangi and Harding Park Reserve Management Plan (RMP).

The adoption of the RMP signalled the start of a new phase for this site and its wider surrounds. It is intended that any future development or land use decisions must recognise the RMP's shared vision/goals for Harding Park and Pou Tu Te Rangi Pa (Park and Pa site).

Discussion/Ngā kōrerorero

- The Dog bylaw has been adopted with the Committee recommendations approved. Dogs are be excluded from the Pou Tu Te Rangi Historic Reserve/Pā site (being Lot 1 DP 79437), with leash control for the remainder of Pou Tu Te Rangi Harding Park.
- The new track so dog walkers can go around the Pā site has been created, this just needs to be metalled when weather permits.
- Two gullies around the old Mt Wesley cemetery have been cleared in preparation for planting.
- Existing native plantings have had the weeds around them removed to release them.
- Speed bumps have been installed on the roadway up by the carpark area and in front of the museum to slow traffic down through this shared area.
- Rural design has been engaged to plant the approved portion of the landscape plan.
- Meetings have been arranged with the Museum and the Vintage Machinery Club to discuss the proposed landscape plan.

- Staff are seeking advice regarding the parking plan portion of the landscape plan presented.
- Staff have received proposed layout plans (**Attachment A**) and costs to construct the mountain bike tracks (**Attachment B**), staff are now having to investigate funding options with the group proposing the tracks.
- Staff have been having discussions regarding the waka Te Wairoa and the possibility of it coming back and being placed at Pou Tu Rangi Harding Park.

Capital Works Programme for 2018/2019

Council has approved \$100,000 per annum for capital works, and the Committee adopted the 2018/2019 Works Programme.

Project	Budget \$	Spend to date \$	Comments
Signage including Pa Hui	4,500	4,774	Complete.
Bollards – Traffic control outside Museum and others around the Park	7,500	7,349	Complete.
Furniture	15,000	18,204	Complete
Landscape design/architect	14,000	7,893	Concept plans received.
Plants	10,000	6,783	Ongoing project
Vegetation removal	6,000	2,667	Ongoing track creation.
Implementation of landscape design	25,000	27,324	Report to Committee to be discussed and approved.
Native plant clearing	18,000	18,060	Complete
Total	\$100,000	\$93,054	

Financial implications

The financial budgets are set within the Long Term Plan and respective Annual Plan.

Significance and engagement/Hirahira me ngā whakapāpā

The decisions or matters of this report do not trigger the significance criteria outlined in Council's Significance and Engagement Policy, and the public will be informed via agenda on the website.

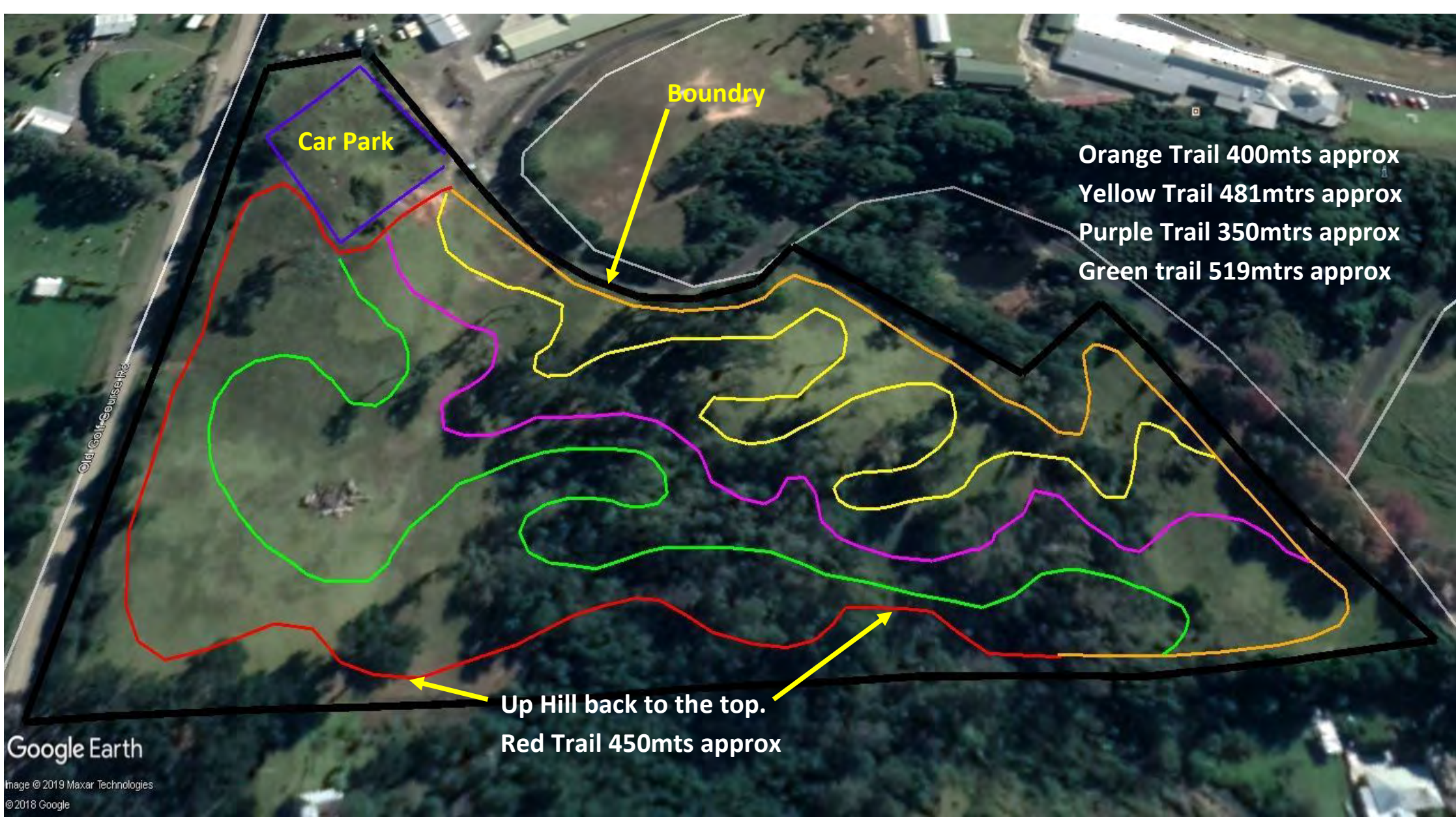
Next steps/E whaiake nei

Council staff will continue to implement the RMP.

Attachments/Ngā tapiritanga

	Title
A	Proposed layout plan
B	Cost Estimate

Hamish Watson, 16 August 2019



Andrew Younger Contracting Ltd

Po Box 296
Paihia
Mobile : 021 438

Email:
andrew@earth-movers.co.nz
Website:

PROJECT:
 HARDING PARK
 DARGAVILLE

CLIENT:



DRAWING:
 Harding Park
 Dargaville

DRAWING NO:

ESTIMATE

Sadie Parker

Date
16 Jul 2019

Expiry
30 Aug 2019

Quote Number
QU-0027

GST Number
102-860-055

ANDREW YOUNGER
CONTRACTING LIMITED
PO Box 296
Paihia 0247
PH: 021439601
EMAIL:
andrew@earth-
movers.co.nz
WEB:
www.earth-movers.co.nz

Harding Park

To design, build, construct approx 5 mountain bike tracks at Harding Park with the total distance being 2400mtrs approx in length.

Description	Quantity	Unit Price	Amount NZD
Design, build, construct approx 5 mountain bike tracks at Harding Park(2400mtrs)	2400.00	23.75	57,000.00
Shape and construct car park with metal base.	1.00	33,452.00	33,452.00
		Subtotal	90,452.00
		TOTAL GST 15%	13,567.80
		TOTAL NZD	104,019.80

Terms

Prices are valid for 30 days and are based on the information provided at the time of estimate.
Prices may change due to any unforeseen circumstances upon job commencement.

Closure

**Kaipara District Council
Dargaville**